

The Wolfe Clinic **Formula**

The Bob Beck Protocol

What Causes Cancer?

The past century has revealed extensive research implicating a microbial origin as the cause of cancer. At the leading edge, Dr. Royal Rife's 1930s research identified evidence of a human cancer virus by isolating and culturing the suspected virus. After injecting numerous rats with the microbe, cancer consistently developed in both live cells and tissue cultures. Numerous other researchers also found evidence proving Rife's findings. Currently, Canadian biologist Gaston Naessens uses ultraviolet microscopy that easily views what has now been identified as the BX cancer virus in live blood samples of cancer patients.

Dr. Rife was the first to prove beyond any doubt that the microbe involved in cancer formation is pleomorphic, meaning the microbe has multiple morphologies that change accordingly with particular external stimulus. Dr. Robert O. Young, PhD., asserts that this pleomorphic microbe is found in every human being and it is irrefutably the inner terrain of the individual that enables the microbe to morph into cancer

(read our article "Reclaim Your Inner Terrain" for a better understanding). Rife proved that the BX cancer virus has four distinct forms that can induce cancer formation within 36 hours of medium alteration. According to Rife:

"In reality, it is not the bacteria themselves that produce the disease, but the chemical constituents of these microorganisms enacting upon the unbalanced cell metabolism of the human body that produces the disease. If the metabolism of the human body is perfectly balanced, it is susceptible to NO disease."

Every human body contains extremely small microbes called "somatids", "microzyma", "bion", or "protits". These are essentially viruses in hibernation that capitalize on our inability to properly detoxify, in which case they morphologically change. Under ideal conditions, these somatids are inert. However, once an organism mutates as a result of a change or stimulus in the environment and the virus penetrates a healthy human cell, the microbe easily alters metabolic functioning within the cell. This metabolic alteration is



The Wolfe Clinic
"FEAR IS THE GREATEST DISEASE"

the precursor to the formation of cancer as described below.

Metabolic Changes and Cancer Formation

A variety of cancer causing agents or toxic carcinogens, enter the body stimulating their transformation into yeast, fungus, mold and/or bacteria. Independent cancer studies on these microbes have produced varied perspectives on the pleomorphic microbe; some call it a virus, some a fungus, a mold, an acid-fast bacteria or mycobacterium, even an amoeba. Which of these descriptions is correct? Most likely all descriptions are valid.

Researchers have indicated that the primary cause of cancer of a cell is the microbial interference with both the Krebs Cycle and the Electron Transport Chain (ETC) in the mitochondria. These two cycles are essential for proper cell functioning, as they are involved in the production of ATP (adenosine triphosphate), the cells' energy source. During normal conditions the cell has an amazing ability to restore the Krebs Cycle and ETC once they are broken. But what interferes with the highly regulated production of ATP and how is it able to continuously inhibit its production?

As previously described, environmental changes cause the alteration of the BX virus into cancer causing pleomorphic forms. These same environmental changes may result in damage or

weakening of cell membranes, enabling these pleomorphic microbes to enter the normal cell, whether presenting as a fungus, mold or bacteria.

Once inside, the microbe intercepts the glucose that is entering the cell and uses it as fuel resulting in microbial fermentation of glucose, which causes excretion of acidic mycotoxins and dangerous hormones. These highly acidic secretions cause a drop in the cells' pH, a characteristic of cancer cells. With the continuous interception of glucose entering the cell, the mitochondrion receives very little glucose to produce ATP. This instigates a dramatic drop in the cells energy levels.

Signals are sent to the insulin and glucose receptors on the membrane of the cells to become hyperactive and bind to more glucose to facilitate cell entry. However, the microbe intercepts this process and the mitochondrion is instead bathed in an increasingly large sea of mycotoxins and hormones. Because there is a limit to how high the activity of these two types of receptors can become, it is impossible for

the mitochondria to get enough glucose for energy production. The cell is now officially cancerous due to the fact that its energy levels have drastically dropped and the cell switches to an anaerobic state, as it is now fermenting glucose instead of breaking it down.

The most important point is that a cancer cell consists of a very sick human cell that is inhabited by a very healthy microbe.

Killing this microbe without killing the human cell is a tricky process and most alternative cancer treatments kill the cancer cell even if it is oxygen based.

There is one interesting thing about this process. Dr. Otto Heinrich Warburg, a two-time Nobel Prize winner, discovered that cancer cells receive their energy by fermenting glucose. In his own words, Dr. Warburg said the following:



“But, even for cancer there is only one primary cause. Summarized in a few words, the cause of cancer is the replacement of the respiration of oxygen in normal body cells by a fermentation of sugar (glucose)”

(Otto Warburg, The Prime Cause and Prevention of Cancer.)

Why is that important?

Fermentation is impossible without yeast! Yeast as a pleomorphic microbe now enters the cancer cell easily. The microbe may enter the cell as a fungus, mold or bacteria, but once inside the cell it ferments like yeast.

Electromedicine

In 1990, Dr. Steven Kaali and Dr. William Lyman discovered that the application of a direct low voltage electric current to AIDS infected blood could deactivate the HIV virus while causing no harm to normal blood cells. Apparently, the application of the current destroyed the outer protein coat of the HIV virus, thereby preventing the virus from producing reverse transcriptase, an enzyme necessary for the viral invasion of host cells. As Kaali and Lyman discovered, without entrance into a host cell, the microorganism is vulnerable to destruction by the body's immune system.

Presented at an AIDS Conference in 1991 in Washington, DC, other than 3 small publications, these findings were suppressed until Dr. Bob Beck, an electromedicine researcher of over 30 years, developed a non-invasive electromedicine machine based on

Kaali and Lyman's research. Beck found that the alternating low frequency current used by Kaali and Lyman could be created within the artery by electromagnetic induction allowing the entire therapy to be applied externally. Just like with the AIDS virus, the alternating current functioned in destroying key enzymes found on the surface of microbes, thereby preventing microbial multiplication. The attenuated microbe, no longer capable of attaching to human cells, can then be safely excreted from the body.

This electromedical treatment was initially used as an AIDS/HIV therapy but Beck found that in some cases the AIDS/HIV virus returned after treatment.



He believed that this was due to the fact that some viruses hide in tissues within the body and are dormant or colonize certain areas and are therefore not circulating within the blood. For example, the AIDS virus colonizes in the gut and the herpes virus is found in the nervous system.

In order to target all areas, Beck developed a Magnetic Pulser to disable

these microbes. The Magnetic Pulser is used to attack microbes which are not circulating in the blood.

The Bob Beck Protocol

Not only has electro therapy been used with immunodeficient patients, cancer patients have also reported tremendous results using the Bob Beck protocol as a cancer therapy. As previously discussed there are many origins in the chain reaction that results in cancer, but no matter what starts the chain reaction, the final step in the process is that a microbe enters a normal cell and interferes with the functioning of the Krebs Cycle and Electron Transport Chain (ETC). The interference converts the normal aerobically functioning cell into an anaerobic cancerous cell. Only the presence of a microbe inside a cell can maintain the cell's inability to restore its Krebs Cycle and ETC.

The Bob Beck protocol removes microbes from the body except for those found within the cancer cells. But how does this protocol effectively aid the body in treating cancer? By removing most of the microbes from the body, the immune system is then supercharged. Dr. Beck believed that electromedicine therapy is an effective way of restoring the immune system and is one of the reasons that the protocol has been so successful with cancer patients. In particular, removing all microbes will allow the immune system to restore its ability to communicate internally and will allow the immune system to



restore important neuropeptides that make up well known cancer fighters, interleukins and interferon.

What is the Bob Beck Protocol?

The Bob Beck Protocol is designed to disable and eradicate microbes within the body and consists of 4 parts:

1. Blood Electrification via the Silver Pulser – disables microbes found in the blood.
2. Pulsed Magnetic Fields via the Magnetic Pulser – disables microbes found within the tissues of the body.
3. Theta Super Silver – an antimicrobial product that is capable of entering a cancer cell and specifically targeting microbial, viral and fungal infection within the body.
4. Restructured Ozonated Water - a proven cancer therapy exhibiting oxidizing, antiseptic and germicidal effects.

An explanation for each part of the protocol is provided below.

SILVER PULSER – Blood Electrification

The Silver Pulser is used to neutralize microbes found in the bloodstream. As a result of massive die-off of microbes due to the Silver Pulser treatments, patients may experience the Herxheimer Reaction resulting in flu-like symptoms. In order to prevent these symptoms from being severe, it is extremely important to drink large amounts of restructured water. We suggest drinking half of your body weight of water (in ounces).

Applying the Electrodes of the Silver Pulser (read carefully):

- Place electrodes directly on top of the arteries and at the location of the strongest pulse of the ulnar and radial arteries of the wrist – patients will become accustomed to electrode placements and electrical current tingling.
- Each electrode should be placed on the inside of a cotton sleeve. The cotton sleeve is used to protect the skin and provide an enhanced electrical conductivity between the electrodes and the skin.
- Sleeves should be wet with salt water so that electricity is transferred from the electrodes to the skin. Salt water should be applied every 20-30 minutes.

- Salt water application may result in a film of water on the surface of the wrist and/or on the bottom of the rubber strap, between the two cotton sleeves. Electricity takes the path of least resistance; as a result, it is possible the electricity will cross over the thin layer of water on your skin or the bottom of the rubber strap, instead of going through the skin and into the blood stream. The patient will know when this occurs because the tingling of the skin, caused by the electrical current, will stop after you put drops of salt water on the cotton sleeves.
- It is imperative that the skin between the two cotton sleeves and bottom of the rubber strap is dry. Be sure to check for this after each time a cotton sleeve is moistened by using a Q-Tip or a dry finger or blow air between the electrodes until the cotton sleeve is dry (tingling should return).

Using the Silver Pulser:

It is suggested that individuals that believe that they may have large amounts of microbes within the body when commencing this treatment (most cancer patients do!), start using the Silver Pulser for 15-20 minutes per day, slowly building it up the time until 2 hours per day are reached. Excluding the buildup, it is suggested that Silver Pulser treatments are maintained for 2 hours per day for 4 weeks. (This treatment can be continued and maintained with daily treatments even after the 4 weeks)

Schedule:

- Week 1 – 20-40 minutes
- Week 2 – 40-60 minutes

- Week 3 – 60-80 minutes
- Week 4 – 80-100 minutes
- Week 5 – 100 minutes

MAGNETIC PULSER – Pulsed Magnetic Fields

The Magnetic Pulser is used to neutralize microbes found within tissues within the body. This is especially important for cancer cell targeting. Patients should be aware that there are several different target areas that they will want to concentrate on.

There are three basic areas that the Magnetic Pulser should be used on:

- Lymph nodes, organ areas, and along the spine - the magnetic pulser can penetrate approximately 9 inches into tissue layers, so the closer to the problem areas that you can get, the better
- Areas of inflammation, swelling, and congestion – the magnetic pulser is a very good anti-inflammatory device

- Known cancerous areas (tumors and cells)

There is no maximum time frame that patients should be using this equipment for but a gradual build up of time is suggested. Some individuals begin treatment by using the machine for 5 minutes a day and increase the time frame each consecutive day by 5 minutes. Others will begin with 10 minutes per day, building up each day by 10 minutes. Most individuals will want to build up their time to in between 30 and 60 minutes each day. It is important that the maximum treatment time coincides with that of the Silver Pulser discussed in the previous section.

Proper water intake is extremely important with any detoxification protocol. When using the Magnetic Pulser, large amounts of restructured water should taken 1 hour prior to the therapy. Water is important with this protocol because it contains electrolytes that generate the current directed at neutralizing the microbes. In addition, water is essential for the detoxification of the lymphatic system.

Since the Magnetic Pulser also targets the lymphatic system, we suggest undertaking an exercise program (if possible) as it is involved in muscle movement that actually generates the movement or ‘pumping’ of lymph fluid. Using a G-Force Rebounder is a great way of increasing lymph circulation in individuals that are active. For those that are not able to exercise, an alternative that will generate similar results is the use of Far Infrared Therapy via a Sauna Dome and Ionic Mat.

The Magnetic Pulser is especially beneficial for individuals with Squamous Cell Carcinoma and Melanoma. These cancers spread in a unique way resulting in extreme metastasis (spreading) ability to any area of the body. As a result, to inhibit its metastasis it is recommended that all body cells be targeted with this therapy. Hold the Magnetic Pulser 3-4 inches above the skin, making sure that every inch is hit 2-3 times. It is recommended that any patients with carcinoma or melanoma be on the Bob Beck protocol for at least 8 weeks.

DO NOT...

- Wear any jewelery and/or belt buckles that may be attracted to magnets
- Point the pulser directly at eyes that have had eye surgery or implants
- Point the pulser directly in the testicular area of men who have prostate cancer – a burning sensation may ensue
- Point the pulser directly at open wounds





The order of using the electromedicine machines is extremely important...

- Do not use the Magnetic Pulser and Silver Pulser simultaneously (electronic damage could result).
- Use the Magnetic Pulser before using the Silver Pulser – the Magnetic Pulser may break apart colonies of microbes and release them into the bloodstream where the Silver Pulser can disable them.
- The Silver Pulser should be started approximately 15-30 minutes after using the Magnetic Pulser.

- The Magnetic Pulser can be used early on in the day and the Silver Pulser used later on in the day if needed.

THETA SUPER SILVER

Silver has been used for thousands of years as ‘nature’s antimicrobial’. It is a systemic disinfectant that works like a secondary immune system that will target the detrimental microbes within the body.

This particular silver supplement is produced through a complex proprietary process that liquefies minerals into a state that when dehydrated, they grow crystals. This process duplicates nature’s method of turning minerals from the earth into a form useable by man – when plants process minerals from the earth,

the minerals are in a crystalline form that is necessary for it to be available to the body for absorption. The silver minerals are found in a pure water solution and are the purest minerals on the market. As a result of its purity and mineral (not metallic) state, argyria (a disease caused by the ingestion of elemental silver turning the skin bluish-grey) is not possible.

RESTRUCTURED OZONATED WATER

Ozone is a superb way of introducing oxygen into the body and is believed to aid the inhibition of metastasis of cancer cells. Studies have shown that there is an inverse relationship regarding the amount of oxygen in the blood and the ability of cancer cells spreading, therefore, more oxygen in the blood results in less cancer metastasis. It has been added to the Bob Beck protocol for its detoxification effect. The following is a list of some major benefits of ozonated water:

- It purifies the blood of some microbes
- It is a superb detoxification method
- It can help stop the spread of cancer
- It may provide energy
- It can help the immune system by providing the white blood cells oxygen singlets

One of the simplest and least expensive ways to get ozone into the bloodstream is to ozonate ice cold, wellness water or vitalized water. The colder the water, the greater the time and amount of ozone the water is able to hold.



There are some important facts when using ozonated water that patients should be aware of:

- Ozone water should be stored only in a glass container. Ozone will tear apart any plastic containers, resulting in leaching of chemicals within the plastic. (Even the cup used to drink the water should be made of glass) Individuals on feeding tubes can only have ozonated water if the feeding tube is made of silicon.
- Ozone water only lasts for 20 minutes after it is made, therefore, the patient should always have freshly made water.
- Use only high quality water for ozonation, preferably restructured pure water.
- Ozone water should not be used when making colloidal silver because when ozonated water is boiled, the ozone is released.
- Detoxification reactions (die-off reactions) can be caused by ozone water, as a result, it is recommended that patients start drinking the water at a dosage that can be handled easily, with a slow, gradual increase in the dose.
- To gradually increase the consumption of ozonated water to a manageable level, start with 10% of your total

liquid intake coming from ozonated water and 90% from restructured water.

- The minimum amount of water (ozonated, restructured or a combination of both) that should be consumed during the protocol is one ounce for every two pounds of weight (ie. half your weight in ounces, 200 lbs person would drink 100 ounces of water).
- BRAIN CANCER PATIENTS should be very careful when administering ozonated water. When cancer cells are eradicated, swelling may result, when the cancer cells are located in the brain, swelling in that area can be detrimental.
- LUNG CANCER, EMPHYSEMA & ASTHMA PATIENTS (or any other individuals with lung congestion) should NOT be administering ANY ozonated water. Ozone gas that is released during the bubbling process can cause congestion or worsen existing congestion. These patients should replace the ozonated water intake with restructured or vitalized water.

Cancer Diet

A healthy human body inhibits the infestation of microorganisms as a result of effective waste removal, continuous detoxification, mineral, vitamin and water intake and proper nutrition. All of these features work together to promote an alkaline internal environment that is not hospitable to microbes. When this delicate balance is disrupted by the ingestion of carbonated liquids, processed foods, sugars, animal protein and dairy products, the pH scale is tilted towards the acidic side, providing the unwanted microorganisms an ideal place to breed.

It is crucial to the effectiveness of this therapy to be on an alkaline diet consisting of fresh and raw foods. Patients should be on as much "live" food as possible. Water makes up 80% of the

contents within our cells, so it is important to be replenishing the body's water reserves with Vitalized water. The minerals derived from food and water will provide the electrolytes needed for the Magnetic Pulser.

Side Effects

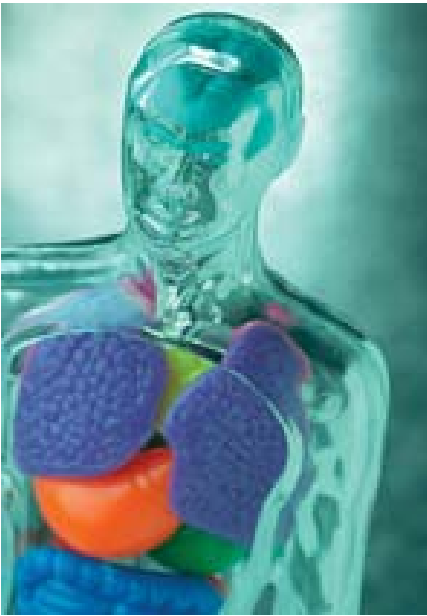
If the safety precautions are followed, the only side-effect that may occur is related to detoxification. The gradual build-up is designed to minimize these detoxification side-effects.

One symptom that may occur as a result of toxin release from the body is puss oozing from orifices of the body. This is a normal and beneficial occurrence resulting in toxins and microbes exiting the body. In some cases superficial swelling as a result of puss build up may occur. This too is normal.

If at any time serious side-effects are noticed, treatment should be stopped immediately and restarted using smaller dosages and gradual buildup to the suggested doses based on how the patient is feeling.

Contraindications

This therapy causes electroporation of the cells, resulting in an increase in cell permeability. As a result, herbal supplements and some prescription medication may be taken during the therapy as long as they are administered 30 minutes after using the Silver and Magnetic Pulsers (not before or during the treatment). If a



substance is taken during the electromedicine treatments, that substance will be driven into the cell at an increased rate of 20 times faster and with a higher concentration than what is normally exhibited. This can result in an overdose.

If there are substances that you are unsure of taking during the administration of this protocol, please contact us for more information. In many cases, small doses of supplements 30 minutes after a therapeutic application can be taken and monitored for any unwanted affects. If no contraindication occurs, a gradual increase in dose is suggested. The gradual buildup will provide an early warning system to safely indicate supplement problems.

Please be aware that highly potent drugs, such as those used with chemotherapy should not be experimented with. Please check with a professional prior to

experimentation with supplements and prescription medication.

Below is a list of standard forbidden substances that should be avoided during the Bob Beck Protocol:

- No orthodox cancer treatments (chemotherapy or radiation)
- No prescription drugs (unless otherwise indicated)
- No painkillers
- No blood thinners (ex. Coumadin)
- No alcohol, recreation drugs, coffee, or tea
- No smoking

Individuals who are pregnant or have pacemakers should not be on this protocol.

Who Can Use This Treatment?

Unfortunately, not all cancer patients can be on the Bob Beck Protocol. Individuals that are on strong prescription medications must first be safely taken off of the drug before they can start the therapy. We recommend discussing possible medicinal termination with your doctor.

As previously mentioned, only mild prescription medication can be experimented with. There is a fine line between drugs that are forbidden to be used with the protocol and those that are considered mild enough to be experimented with. It is up to the patient, family and doctor to decide which route they should go with.

The Cesium Chloride Protocol, Chronic Illness Fast and LemonAid Cleanse can be used in conjunction with the Bob Beck

Protocol (as long as it is done after the Bob Beck treatment). Customarily, the cesium protocol is administered in the morning; as a result, the Bob Beck protocol should be done early in the morning or late at night.

1-800-592-9653

1-250-765-1824

Live Long and Live Disease Free

Dr. Darrell L. Wolfe AC, Ph.D.

products that help

FIRST AID KIT



Aesta Supreme

Surround yourself with 360 degrees of healing heat with the Aesta Supreme. This is a super combination of the Aesta FIR Sauna Dome and the Aesta Ion Mat. There is no better recipe for vital health. Separately they are superb therapeutic devices which use only the latest and best FIR technology and construction.

Water Vitalizer Plus



Are you getting the most out of your water? If not phone and ask about The Water Vitalizer Plus

Wellness Water Filter



This new filter incorporates the same natural purification technology exclusive to Wellness & installed in hospitals, spas, supermarkets and now over 750,000 homes.

MRS 2000



The new MRS 2000+ design is the evolution result of over 10 years of experience in the field of magnetic-resonance-stimulation. It combines every necessary parameter for extremely easy and safe use and the maximum of effectiveness of all magnetic-resonance systems.

Photon Genie



Lakhovsky introduced his treatment machine, the "MWO" (Multi-Wave Oscillator), which was a "Spark Gap Transmitter" that produced very strong frequency signals with some harmonics in the ultra high frequency spectrum.

Aesta Ozonator Plus



Element ozone counter top home water purifier. It removes bacterial, fungal and viral agents as well as chemical carcinogens in the tap water.

Royal Tea



Good intestinal health is important and should be preserved and maintained daily. This is the only product that does that safely and effectively.

Super Z-lite



An affective chelator with a crystalline cage zeolites become slightly positively charged and is attracted to the negatively charged membrane structure.

Vitalzym



Vitalzym provides the enzymes needed for each of the millions of biochemical reactions that make life possible. Without enzymes, life could not exist.

The Wolfe Clinic

1-800-592-9653

www.TheWolfeClinic.com www.ShopTheWolfeClinic.com

Subscribe to my free newsletter: healthtips@thewolfeclinic.com



Syclovir

Syclovir is a food supplement made from plankton. It is safe alternative treatment for Candida, parasites and worms; without any harmful side-effects.

There are many different types of parasites infecting different portions of our bodies and unknown to most is that animals and birds carry their own special types of parasites, many of which can also be transmitted to humans.

Active Ionic



The effects of mineral deficiencies have been well documented for over 100 years.

Omica Plus



Our proprietary formulation gives you the highest possible concentration of Fulvic acids, trace minerals & Amino Acids.

Oil Of Oregano



Super Strength Oil of Oregano is a highly concentrated oil of oregano. It is 300% more concentrated than the regular oil of oregano on the market.

Royal Flora



Royal Flora SBOs are non-pathogenic friendly micro-organisms that crowd out pathogens and harmful bacteria.

Bioxy



A specially formulated MAGNESIUM PEROXIDE compound with OXYGEN enhancement & pro-oxidant VITAMIN C with BIOFLAVONOIDS.

Salvestrol Gold Cream



15ml Cream with our Gold Salvestrol Fruit Extract. Salvestrol Gold Cream has been formulated for topical application

Ultra 1 & 2



Help the Immune system fight a cold or flu as well as support your body during long-standing chronic viral problems.

Super Silver



Silver has been used for thousands of years for health care.

The Wolfe Clinic

1-800-592-9653

www.TheWolfeClinic.com www.ShopTheWolfeClinic.com

Subscribe to my free newsletter: healthtips@thewolfeclinic.com